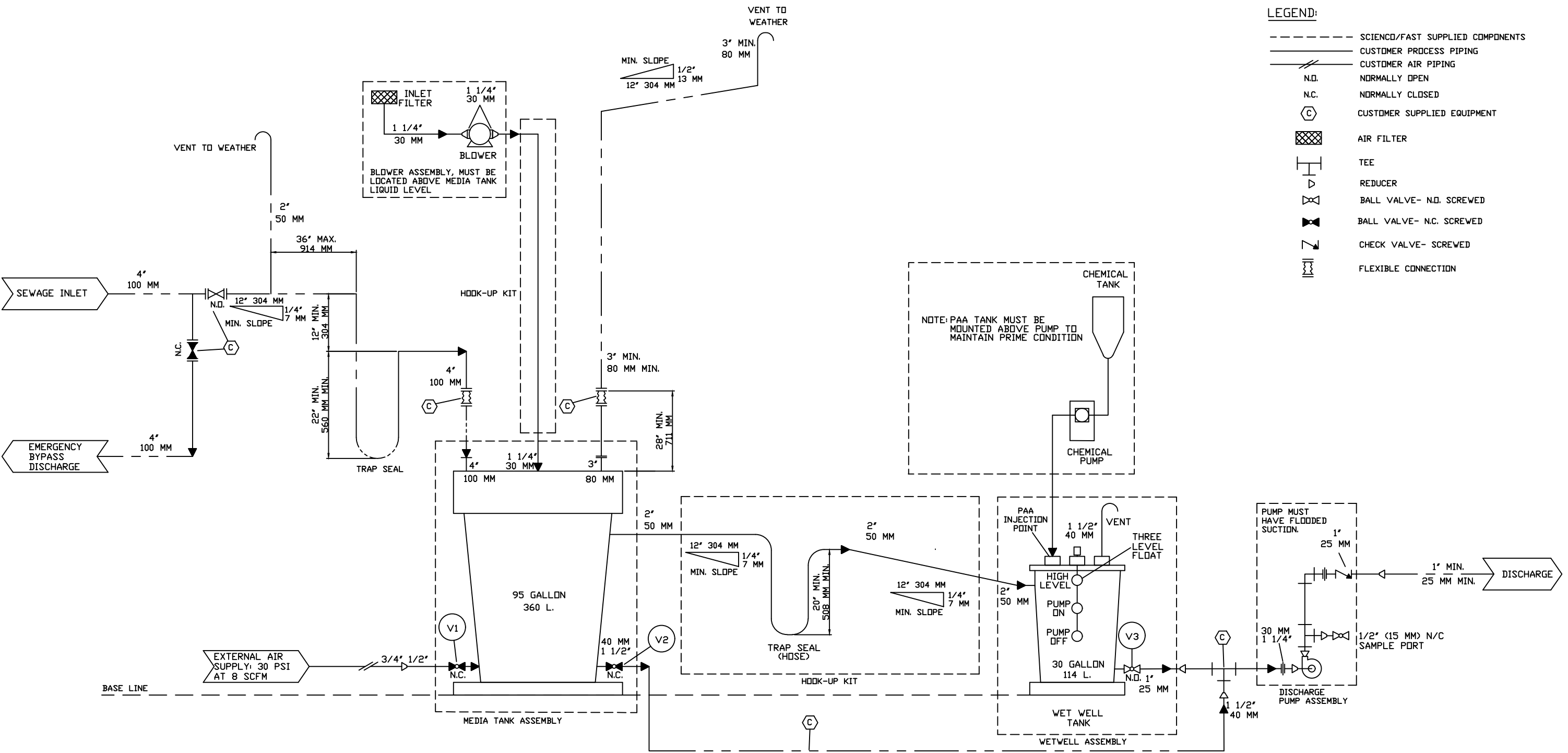


**LEGEND:**


---	SCIENCO/FAST SUPPLIED COMPONENTS
—	CUSTOMER PROCESS PIPING
—	CUSTOMER AIR PIPING
N.O.	NORMALLY OPEN
N.C.	NORMALLY CLOSED
(C)	CUSTOMER SUPPLIED EQUIPMENT
[X]	AIR FILTER
T	TEE
R	REDUCER
BV	BALL VALVE- N.O. SCREWED
CBV	BALL VALVE- N.C. SCREWED
CV	CHECK VALVE- SCREWED
F	FLEXIBLE CONNECTION



NOTE: DRAWING DEPICTS SYSTEM IN NORMAL RUN POSITION.  
USE DE-CHLOR BY-PASS WHEN PUMPING OUT MEDIA TANKS

**MANUAL VALVE POSITION CHART**

VALVE NO.	VALVE FUNCTION	OPERATING POSITION		
		RUN	SCOUR	DRAIN
V1	MEDIA TANK AIR SCOUR	CLOSED	OPEN	OPEN
V2	MEDIA TANK DRAIN	CLOSED	OPEN	OPEN
V3	WETWELL DRAIN	OPEN	OPEN	OPEN

REV	DESCRIPTION	BY	DATE
 <b>SCIENCO/FAST®</b> 200 SUN VALLEY CIRCLE FENTON, MO. 63026-4691 U.S.A. PHONE: 314-756-9300 FAX: 314-756-9306			
THIS DRAWING AND INFORMATION CONTAINED THEREIN IS THE PROPERTY OF SCIENCO/FAST SYSTEMS AND IS LOANED WITH THE EXPRESSED AGREEMENT THAT IT WILL NOT BE REPRODUCED, COPIED, OR OTHERWISE DISTRIBUTED, DIRECTLY OR INDIRECTLY, AND WILL NOT BE USED IN WHOLE OR IN PART, TO FURNISH ANY INFORMATION FOR THE MANUFACTURING OF EQUIPMENT OR APPARATUS WITHOUT WRITTEN PERMISSION OF SCIENCO/FAST SYSTEMS FIRST OBTAINED AND SPECIFIC TO EACH CASE.			
SYSTEM		SCIENCO/FAST MARINE/FAST	
CUSTOMER		CUSTOMER NAME HERE	
TITLE		L2XM SYSTEM DRAWING PIPING SCHEMATIC	
SCALE	1"=1'-0"	DRAWN	SC
SIZE	N/A	CHECKED	SC
CONTRACT NO.	MODEL NO.	APPROVED	N/A
		DATE	
		PLOT SCALE	1:1
		DATE	1/2024
		SHEET NO.	3 of 5
		REV	
MASTER		CU103	