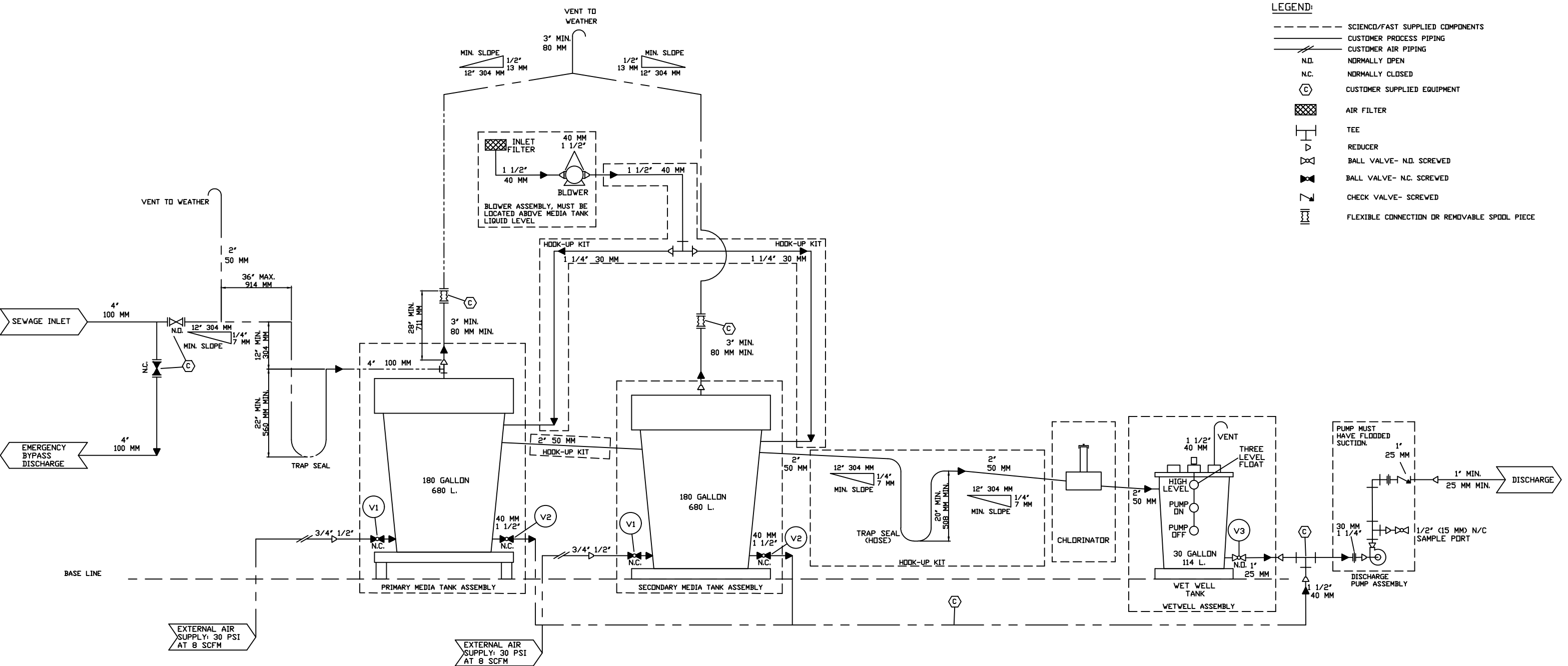



- LEGEND:**
- SCIENCO/FAST SUPPLIED COMPONENTS
 - CUSTOMER PROCESS PIPING
 - CUSTOMER AIR PIPING
 - N.O. NORMALLY OPEN
 - N.C. NORMALLY CLOSED
 - (C) CUSTOMER SUPPLIED EQUIPMENT
 - [X] AIR FILTER
 - T TEE
 - △ REDUCER
 - ⊘ BALL VALVE- N.O. SCREWED
 - ⊘ BALL VALVE- N.C. SCREWED
 - ⊘ CHECK VALVE- SCREWED
 - [] FLEXIBLE CONNECTION OR REMOVABLE SPOOL PIECE



NOTE: DRAWING DEPICTS SYSTEM IN NORMAL RUN POSITION.
USE DE-CHLOR BY-PASS WHEN PUMPING OUT MEDIA TANKS

MANUAL VALVE POSITION CHART				
VALVE NO.	VALVE FUNCTION	OPERATING POSITION		
		RUN	SCOUR	DRAIN
V1	MEDIA TANK AIR SCOUR	CLOSED	OPEN	OPEN
V2	MEDIA TANK DRAIN	CLOSED	OPEN	OPEN
V3	WETWELL DRAIN	OPEN	OPEN	OPEN

REV	DESCRIPTION			BY	DATE
 SCIENCO/FAST® 200 SUN VALLEY CIRCLE FENTON, MO. 63026-4691 U.S.A. PHONE: 314-756-9300 FAX: 314-756-9306					
<small>THIS DRAWING AND INFORMATION CONTAINED THEREIN IS THE PROPERTY OF SCIENCO/FAST SYSTEMS AND IS LOANED WITH THE EXPRESSED AGREEMENT THAT IT WILL NOT BE REPRODUCED, COPIED, OR OTHERWISE DISTRIBUTED, DIRECTLY OR INDIRECTLY, AND WILL NOT BE USED IN WHOLE OR IN PART, TO FURNISH ANY INFORMATION FOR THE MANUFACTURING OF EQUIPMENT OR APPARATUS WITHOUT WRITTEN PERMISSION OF SCIENCO/FAST SYSTEMS FIRST OBTAINED AND SPECIFIC TO EACH CASE.</small>					
SYSTEM		SCIENCO/FAST MARINE/FAST			
CUSTOMER		CUSTOMER NAME HERE			
TITLE		L6X SYSTEM DRAWING PIPING SCHEMATIC			
SCALE	1"=1'-0"	DRAWN	SC	CHECKED	SC
APPROVED	N/A	PREV. ASSY.	N/A	PLOT SCALE	1:1
SIZE	N/A	NEXT ASSY.	N/A	DATE	1/2024
CONTRACT NO.	MODEL NO.	DRAWING NO.	SHEET NO.	REV	
	MASTER	CU103	3 of 5		